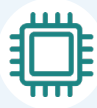




*XPON ONU*

*1GE+1FE+CATV+WIFI*

***FD702XW-X-R410***



High Speed CPU



Low Power Consumption



Optional Shell Supply



Software Customization

## Brief Views

---

FD702XW-X-R410 dual-mode ONU supports EPON and GPON two modes access. The ONU automatically switches into the corresponding PON mode by identifying the local OLT mode to complete GPON or EPON adaptive access.

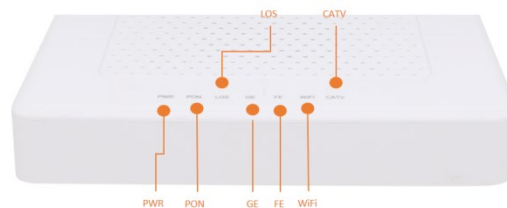
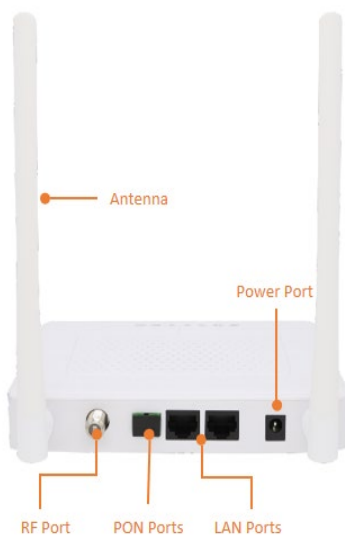
It adopts single fiber WDM technology with downlink wavelength 1550nm and 1490nm, uplink wavelength 1310nm . It only needs one-core fiber to transmit data and CATV service.

FD702XW-X-R410 integrates wireless function which meets 802.11 b/g/n technical standards. It has two external high gain omnidirectional antennas, the wireless transmission rate up to 300Mbps. It has the characteristics of strong penetrating power and wide coverage. It can provide users with more efficient data transmission security.

## Functional Feature

- Single-fiber access, provides internet, CATV, WIFI multiple service
- In compliant with ITU - T G. 984 and IEEE802.3ah standard
- Support ONU auto-discovery/Link detection/remote upgrade of software
- Meet 802.11 b/g/n WIFI technical standard
- Support VLAN transparent, tag configuration
- Support multicast function
- Support DHCP/Static/PPPOE internet mode
- Support port-binding
- Support data encryption and decryption function
- Support Dynamic Bandwidth Allocation (DBA)
- Support MAC filter and URL access control
- Support remote CATV port management
- Support power-off alarm function ,easy for link problem detection
- Specialized design for system breakdown prevention to maintain stable system
- EMS network management based on SNMP ,convenient for maintenance
- Support OAM/OMCI+TR069 remote management

## Product Interface and LED



## LED Definitions

| Indicator |                      | Description  |
|-----------|----------------------|--|
| PWR       | Power status         | On: The ONT is power on;<br>Off: The ONT is Power off;   |
| PON       | ONT Register         | On: Success to register to OLT;<br>Blinking: In process of registering to OLT;<br>Off:Failed to register to OLT or no normal optical signal input; |
| LOS       | XPON optical signals | On: Optical power lower than receiver sensitivity;<br>Off: Optical in normal;  |
| GE        | LAN port status      | On: Ethernet connection is normal;<br>Blinking: Data is being transmitted through the Ethernet port;<br>Off: Ethernet connection is not set up;    |
| FE        | LAN port status      | On: Ethernet connection is normal;<br>Blinking: Data is being transmitted through the Ethernet port;<br>Off: Ethernet connection is not set up;    |
| WIFI      | WIFI                 | Blinking: Data is being transmitted<br>On: WIFI function Opens   |
| CATV      | CATV status          | On: CATV optical normal<br>Off: The CATV signals are not received  |

Software Customization

## Hardware

### ● GPON/EPON Port

- Single mode single fiber
- GPON: FSAN G.984.2 standard
- EPON: 1000BASE-PX20+ symmetric
- GPON: 2.488Gbps/1.244Gbps downstream/upstream
- EPON: 1.25Gbps downstream/upstream
- Wavelength :  
Transmit: 1310nm    Receiver: 1490nm
- Receiving sensitivity :  
GPON: -28dBm    EPON: -27dBm
- Saturated power :  
GPON: -8dBm    EPON: -3dBm
- Transmitting power :  
GPON: 0.5~5dBm    EPON:0~4dBm

### ● User Port(LAN)

- RJ-45 connector
- 1\*10/100 and10/100/1000Mbps adaptive Ethernet port
- Full/half duplex
- Auto MDI/MDI-X

### ● WIFI performance parameters

- IEEE802.11b/g/n(2.4G)
- Max rate: 300M(2.4G)
- Antenna gain: 5dBi
- Max TX power: 2.4G: 17dBm
- Max TX power: 2.4G: 20dBm

- **CATV (Input /Output port)**

- Wavelength: 1550nm
- Input optical power: -15dBm~+2dBm(without AGC)
- )
- RF frequency: 47MHz~1000MHz
- RF output level:  $\geq 65\text{dBuV}$  (@-12dBm@85MHz) (without AGC)
- RF output return loss: >10dB(without AGC)
- RF impedance: 75  $\Omega$

- **Indicators**

- PWR / PON / LOS / GE / FE / CATV / WIFI

- **Power**

- External 12VDC/1A power supply adapter
- Power consumption: <8.5W

- **Dimension and Weight**

- Item Dimension:
- 160mm(L) x 139.5mm(W) x 28.5mm (H)
- Item weight: 0.23kg

- **Environmental Specifications**

- Operating temperature: 0 to 40° C
- Storage temperature: -40 to 85° C
- Operating humidity: 10% to 90%(Non-condensing)

## Software

- **Management**

- EPON :OAM / WEB / TR069 / Telnet
- GPON:OMCI / WEB / TR069 / Telnet

- **Register**

- Auto-discovery/Link detection/Remote upgrade software
- Auto/MAC/SN/LOID+Password authentication

- **L3**

- IPv4/IPv6 Dual Stack
- NAT
- DHCP client/server
- PPPOE client/ Pass through
- Static and dynamic routing

- **Switch**

- MAC address learning
- MAC address learning account limit
- Port isolation
- Port flow control
- Broadcast storm suppression
- VLAN transparent/tag/translate/trunk

- **Multicast**

- IGMP V2
- IGMP VLAN
- IGMP transparent/Snooping/Proxy

- **Wireless**

- 2.4G: 4\*SSID
- 2\*2 MIMO
- SSID broadcast/ hide
- Choose channel automatically

- **Security**

- Firewall
- MAC address/URL filter
- Remote WEB/Telnet access control

## Application

- Typical Solution: FTTH
- Typical Business: Internet, CATV, Wi-Fi

